

# Illustra Standard V Series Indoor Dome Camera Quick Start Guide

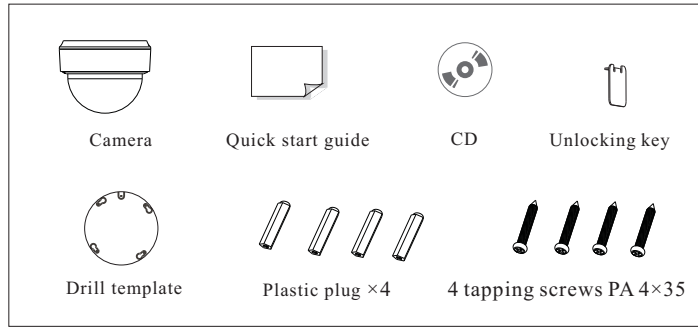
ISV-D02V013S-N

- Please read this instruction carefully for correct use of the product and keep it for further reference.
- All the examples and pictures used here are for reference only.
- The contents of this manual are subject to change without notice.

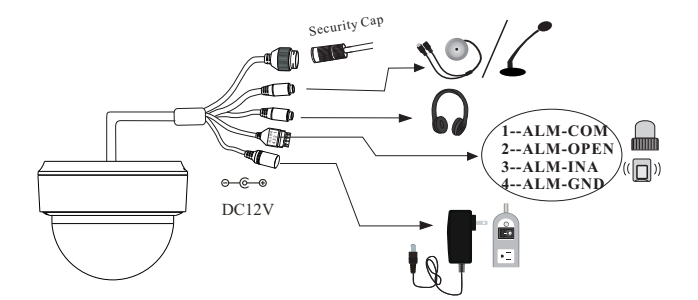
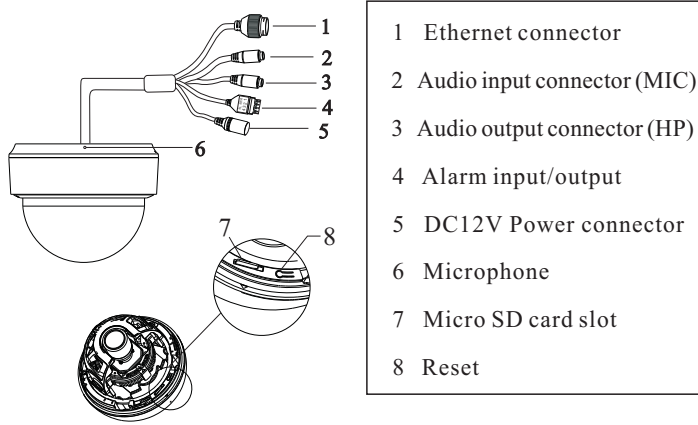
## 1 Warning and Caution

- If the product does not work properly, please contact your dealer or the nearest service center. Never attempt to disassemble the camera yourself. (We shall not be responsible for any problems caused by unauthorized repair or maintenance.)
- Keep away from liquid while in use.
- In the use of the product, you must be strict compliance with the electrical safety regulations of the nation and region. When the product is mounted on wall or ceiling, the device shall be firmly fixed.
- Do not use camera beyond specified voltage range.
- Do not drop the camera or subject it to physical shock.
- Avoid touching the camera lens.
- Please do not touch the camera directly. If cleaning is necessary, please use clean cloth to wipe it gently.
- Do not aim the camera at the sun or extra bright place.
- Do not place the camera in extremely hot, cold (the operating temperature shall be (-10°C~40°C), dusty or damp locations, and do not expose it to high electromagnetic radiation.
- To avoid heat accumulation, good ventilation is required for operating environment.

## 2 Package



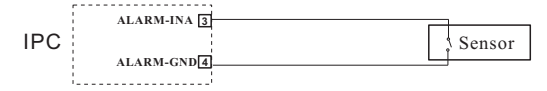
## 3 Overview



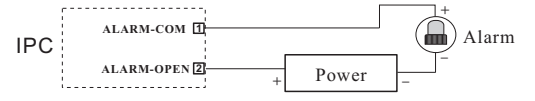
\* If the PoE switch is used to power the camera, DC12V power supply is not required.

### ● Connecting Alarm Input/Output

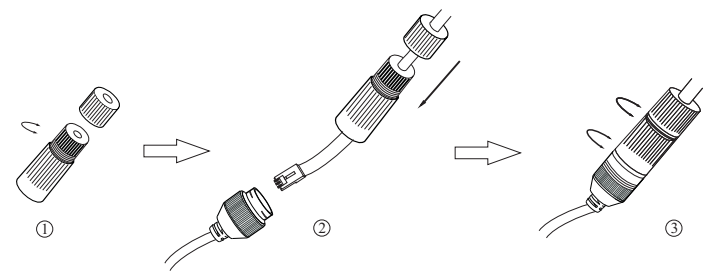
Alarm Input:



Alarm Output:



### ● Connecting Network Cable

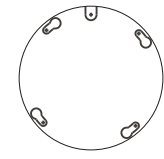


- ① Loosen the nut from the main element.
- ② Run the network cable (without RJ 45 connector) through the both elements. Then crimp the cable with RJ 45 connector.
- ③ Connect the cable to the hermetic connector. Then tighten the nut and the main cover.

## 4 Installation

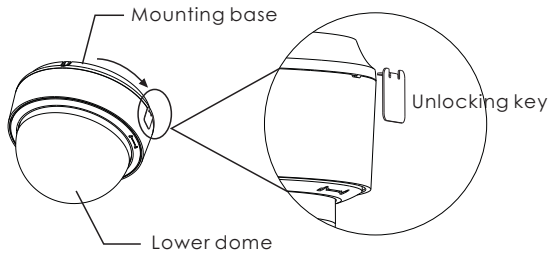
Before start, please make sure that the wall or ceiling is strong enough to withstand 3 times the weight of the camera. Please install and use the camera in the dry environment. You'd better install back the lower dome less than 4 hours after removing it. The mounting steps are as follows:

- ① Attach the drill template to the place where you want to fix the camera and then drill 4 screw holes and 1 cable hole (if you want to route the cables through the mounting base) according to the drill template. Then insert the plastic plug into the holes.



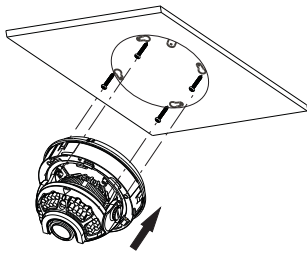
## 2 Package

② Insert the unlocking key provided into the gap of the housing (as indicated below). Press the unlocking key and make it close to the housing with your one hand. Then rotate the black mounting base anticlockwise to open the lower dome with the other hand.



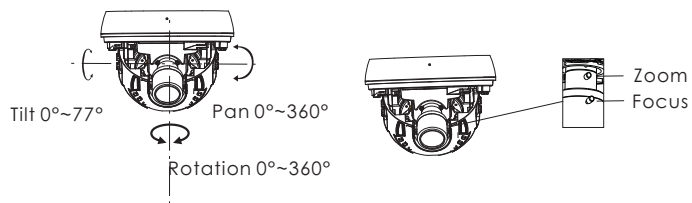
③ Route and connect these cables.

④ Lock the screws into the holes of the drill template but not tighten them and leave about 10mm clearance. Align the mounting holes of camera at the screws and then tighten the four screws.

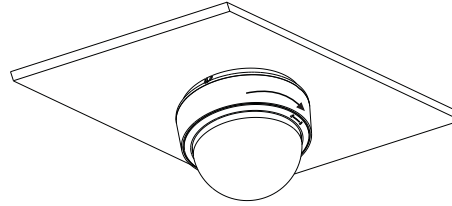


⑤ Three-axis adjustment. Before adjustment, preview the image of the camera on a monitor and then adjust the camera according to the figure below to get an optimum angle.

⑥ Adjust the Focus and Zoom screw to get a clear image (if your camera is fixed lens, please skip this step).

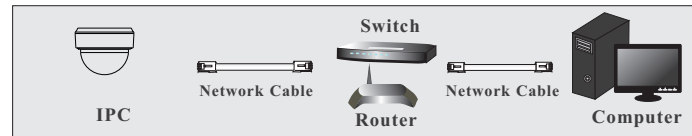


⑦ Install the lower dome back to the camera with the screws and remove the protection film softly to complete the installation.



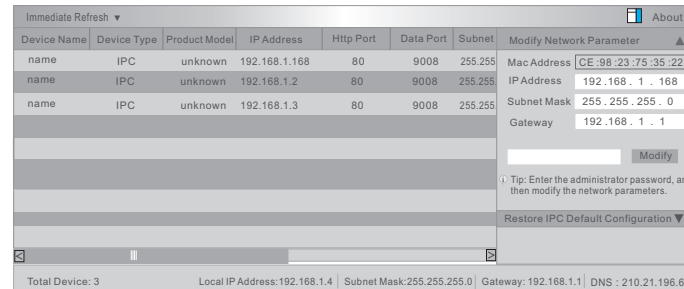
## 5 Network Connection

### ● Access the camera through TycoIPTool

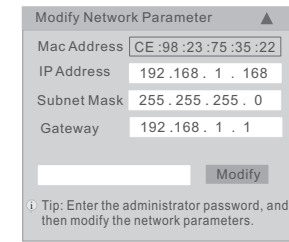


① Make sure that the camera and the PC are well connected to the LAN.

② Find the TycoIPTool from the CD and then install it in the computer. After that, run the TycoIPTool as shown below.



③ Modify the IP address. The default IP address of this camera is 192.168.1.168. Click the information of the camera listed in the above table to show the network information on the right hand. Modify the IP address and gateway of the camera and make sure its network address is in the same local network segment as that of the computer. Please modify the IP address of your device according to the practical situation.



For example, the IP address of your computer is 192.168.1.4. So the IP address of the camera shall be changed to 192.168.1.X and the gateway shall be changed to 192.168.1.1. After modification, please enter the password of the administrator and click “Modify” button to modify the settings.

⚠ The default password of the administrator is “*admin*”.

④ Double-click the camera listed in the IP-Tool or manually enter the IP address in the address bar of the web browser to connect IP-CAM. Then follow directions to download and install the plugin.

⑤ Enter the username and password in the login interface.

⚠ The default username is *admin*; the default password is *admin*.