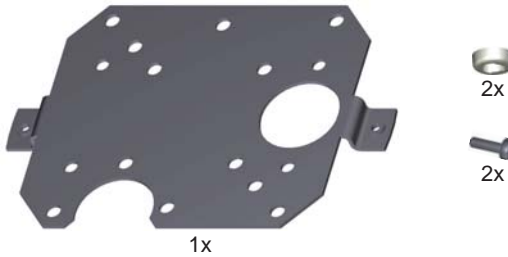




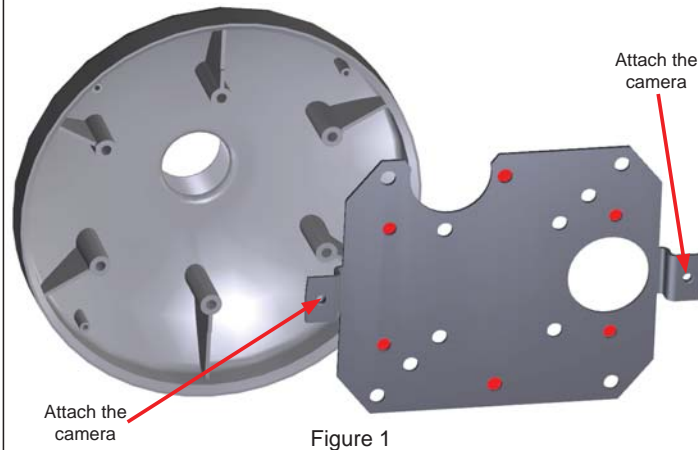
**What's in the box?**



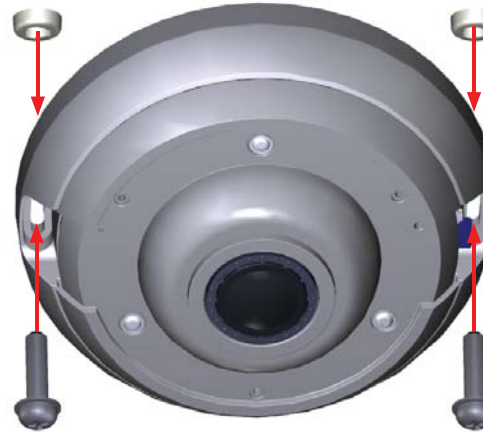
**Note:**  
This guide assumes that the mounting structure/wall boxes to which the mounting bracket is attached are in place and that cables have been pulled to the installation site.

**Attach the Mounting Bracket to the ADCiM6PENDCAPxK Pendant Cap Mount**

1. Remove the inner trim ring from the pendant cap.
2. Using 6 x M4x6 screws, attach the Mounting Bracket to the Pendant Cap using the corresponding holes (highlighted Figure 1). Sequentially tighten the screws to secure the mounting bracket.

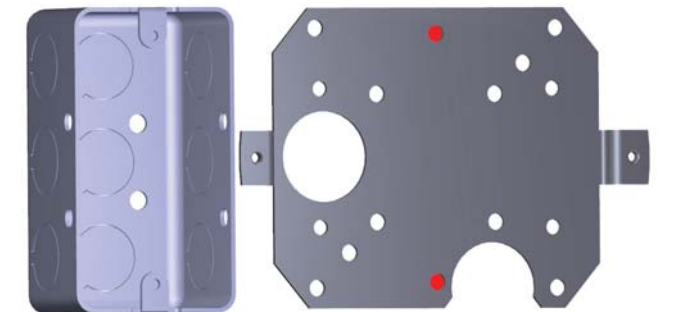
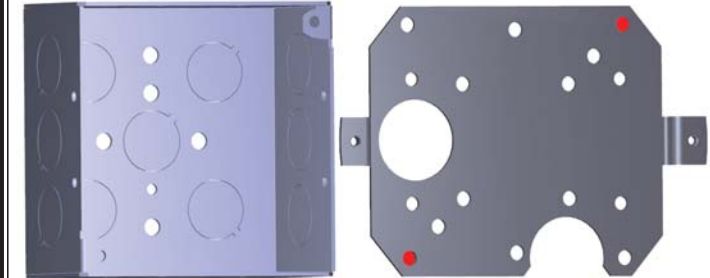
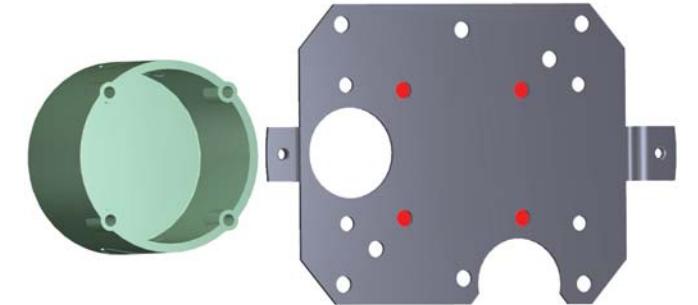
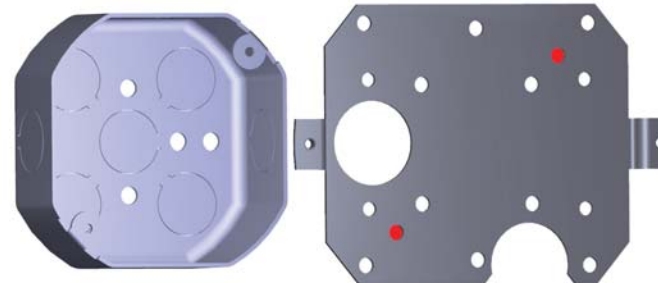


3. Feed the cable through the access holes on the pendant cap and mounting bracket.
4. Connect the cable to the camera (refer to the Quick Installation Guide supplied with the camera).
5. Insert the 2 x M4x15 screws into the camera base and secure with the captive washers (as seen in Figure 2).
6. Attach the camera to the corresponding holes on the mounting bracket and tighten the 2 x M4x15 screws to secure.
7. Refer to the Quick Installation Guide supplied with the camera for installation and configuration options.



**Attach the Mounting Bracket to a Wall Box**

1. Using M4x6 screws, attach the Mounting Bracket to the wall box using the corresponding holes (highlighted on the following diagrams).



2. Feed the cable from the wall box through the access hole on the mounting bracket.
3. Connect the cable to the camera (refer to the Quick Installation Guide supplied with the camera).
4. Insert the 2 x M4x15 screws into the camera base and secure with the captive washers (as seen in Figure 2).
5. Attach the camera to the corresponding holes on the mounting bracket and tighten the 2 x M4x15 screws to secure.
6. Refer to the Quick Installation Guide supplied with the camera for installation and configuration options.