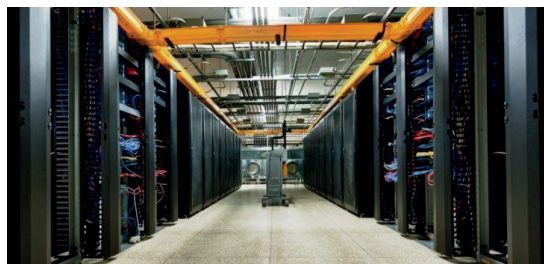


Illustra Flex Gen4

2MP, 5MP, 8MP Mini-Domes



Key Features

- 2MP, 5MP & 8MP resolution provides true HD quality images with video analytics along with improved WDR
- Built in AI delivers accurate object classification, powerful situational awareness and security automation
- Increased IR Distance
- VideoEdge® TrickleStor technology for edge-based failover redundancy
- Easy to install with user friendly accessories and Wi-Fi configuration
- NDAA and TAA Compliant

High-Quality, Versatile Video Capabilities

The powerful Illustra Flex Mini-Domes are designed to offer a superior image quality, feature rich surveillance option for a wide range of applications. The outdoor mini-domes feature built-in long range IR illuminators to produce clear images at an effective distance of 131 ft (40 m) in a variety of low light conditions. Fourth-generation Illustra Flex models offer high resolution and high performance while simplifying installation and configuration.

Edge Intelligence Driven by Deep Learning AI

Illustra Flex Mini-Domes are powered by the rise of intelligence at the edge. With built-in AI based object classification, events can be narrowed to classes such as person, car, bus, motorcycle and more. Forensic searches becomes more accurate and situational awareness more automated with fewer missed incidences and false alarms. Choose from a variety of analytic rules to customize the solution that will be most beneficial to your business and begin gathering transformative data instantly.

Powerful Technology to Increase Confidence and Savings

The Flex product family cameras feature built-in technology that ensure efficient recording and smart bandwidth management. When paired with VideoEdge, exacqVision NVR or Cloudvue, edge-based failover redundancy allows video recording to continue on the camera when a network disruption occurs or the NVR / cloud is offline. When the connection is restored, video transfers back to the media database for a seamless video timeline experience. Illustra® IntelliZip continuously monitors and optimizes system streaming parameters to match the level of activity within the camera's field of view.

Safeguard Against Cyber Attacks Across Devices

Illustra Flex cameras have been designed to be resilient against cyber threats. Our products are gated, analyzed, tested and required to meet and exceed the rigorous standards of the Johnson Controls Cyber Solutions Product Security Program for every release. This holistic approach is aimed at providing peace of mind to our customers. Our security mindset begins at initial design concept and is supported through deployment, including a rapid incident response to meet the comprehensive and evolving cybersecurity environments.

Specifications

Operational	2 MP	5 MP	8 MP
Video Compression	H.264 / H.265 / MJPEG / IntelliZip		
Max Frame Rate	2MP @ 60fps	5MP @ 30fps	8MP @15fps
Resolution & Aspect Ratio	1920 x 1080 (1080p) 16:9	2560 x 1920 (5MP) 4:3	3840 x 2160 (4K) 16:9
	1664 x 936 (HD+) 16:9	2560 x 1440 (4MP)*1 16:9	3264 x 1840 (6MP)16:9
	1280 x 720 (720p) 16:9	1920 x 1080 (1080p) 16:9	2688 x 1520 (4MP)16:9
	1024 x 576 (PAL+) 16:9	1664 x 936 (HD+) 16:9	1920 x 1080 (1080p) 16:9
	960 x 544 (qHD) 16:9	1280 x 720 (720p) 16:9	1664 x 936 (HD+) 16:9
	816 x 464 16:9	1024 x 576 (PAL+) 16:9	1280 x 720 (720p) 16:9
	640 x 360 (nHD) 16:9	816 x 464 16:9	1024 x 576 (PAL+) 16:9
	480 x 272 16:9	800 x 600 (SVGA) 4:3	960 x 544 (qHD) 16:9
		800 x 448 16:9	816 x 464 16:9
		640 x 360 (nHD) 16:9	640 x 360 (nHD) 16:9
		480 x 272 16:9	480 x 272 16:9
		*default resolution	
Imager	1/2.8" Sony IMX327 CMOS	1/2.8" Sony IMX335 CMOS	1/1.8" Sony IMX334 CMOS
Image Orientation Settings	None, Mirror, Flip, Flip and Mirror, Corridor (rotate 90° right or left)		
Video Streams	Triple Streaming		
Lens Type	Motorized Varifocal and Focus, P-Iris		
Focus Control	One Touch Auto-Focus or Remote Adjustment		
Focal Length	2.7-13.5mm	2.7-13.5mm	3.6-11mm
Field of View Wide (H/V)	112°/58°	103°/74°	95°/53°
Field of View Telephoto (H/V)	35°/20°	33°/25°	49°/28°
Aperture	f/1.4 (W)	f/1.4 (W)	f/1.5 (W)
	f/2.8 (T)	f/2.8 (T)	f/2.8 (T)
Minimum Illumination			
Color, 1/4s, 30 IRE, AGC	0.04 Lux	0.11 Lux	0.2 Lux
B/W, 1/4s, 30 IRE, AGC	0.02 Lux	0.06 Lux	0.11 Lux
W/IR	0.0 Lux	0.0 Lux	0.0 Lux
IR Distance	Indoor: N/A; Outdoor: 131 ft (40 m)		
Dynamic Range	True WDR 120 dB Technologies		True WDR 140 dB Technologies
Day/Night	True Day/Night CF Removal		
Shutter Speed	≥ 1/10,000 to 1/4 s		
ONVIF-Conformant	Profile S, G, M		
Smart Defog	Supported		
Smart Defog	Supported		

Privacy Zones	8
Alarm Input/Output	1 input, 1 output
Video Output	HDMI (requires accessory)
Micro USB	For configuration through Wi-Fi dongle only
Audio	Bi-directional; 1 input, 1 output
Simultaneous Users	10
Supported Languages	Arabic, Chinese (Simplified), Chinese (Traditional), Czech, Danish, English (default), French, German, Hungarian, Italian, Japanese, Korean, Netherlands, Polish, Portuguese, Russian, Spanish, Swedish, Turkish
Analytics	
AI Object Analytics	Object Classes: Person, Bicycle, Bus, Car, Motorbike, Train, Truck, Any Class Trigger Rules: Object Detected, Perimeter, Linger, Dwell, Abandoned/Removed, Enter, Exit, Crowd, Queue Object Sub-Classes: Person Clothing Colour, Vehicle Colour
AI Tamper Detection	Blackout, Whiteout, Scene Change (FoV tamper)
AI Blur Detection	Supported
AI Metadata	Supported
AI Image Processing	AI Auto Exposure
Motion Detection Zones	3 Zones
Network	
Ethernet Interface	10/100 BaseT, RJ-45, Auto-Negotiation
Supported Protocols	TCP/IP, IPv4, IPv6, TCP, UDP, HTTP, FTP, DHCP, WS-Discovery, DNS, DDNS, RTP, TLS, RTSP, ICMP, Unicast, Multicast, NTP, SMTP, WS-Security, SNMP, CIDS, FSTP, UPnP™, SIP
Configuration Management	
Web Browsers	MS Edge, Firefox, Safari, Chrome
Security	Secure Boot, Enhanced Security Mode (forces complex passwords, HTTPS and disables discovery); TLS 1.2 (256 bit cipher minimum); Security Overview Page (status and configuration); RTSP Authentication; IEEE 802.1X Client; Remote Accessible Audit logs; Role-Based Access Control, Video Encryption for local storage and streaming.
Onboard Storage	
Card Support	micro SDXC slot support upto 1TB; Card not included
Pre-Alarm Recording	Yes
Recording Format	MP4 File Format
Recording Trigger	Dry Contact Alarms, Motion Detection, AI Object Classification, Periodic Events
TrickleStor	Yes, encrypted storage
Electrical	
Power	Power over Ethernet (PoE) IEEE 802.3af/802.3at Type 1 Class 3; 24 VAC or 24 VDC Indoor: PoE 4K=6.72W, 2MP/5MP= 6.24W; 24 VAC 4K=7.9W, 2MP/5MP= 7.6W Outdoor: PoE 4K=12.72W, 2MP/5MP= 11.8W; 24 VAC 4K=13.2W, 2MP/5MP= 12.9W
Dual Power	Supported
Physical	
Dimensions (RxH)	Ø123mm x 107mm (4.85 in x 4.21 in)
Weight	0.97 kg (2.14 lbs)
Housing Color	Signal White - RAL 9003
Operating Temperature	Indoor: -10°C to +60°C (14°F to 140°F); Outdoor: -50°C to +60°C (-58°F to 140°F)
Humidity	Up to 90% Non-Condensing
Vandal Resistant	IK10
Outdoor Rating	IP66/IP67
Regulatory	
Safety	UL 62368-1; CAN/CSA C22.2 No. 62368-1-14; IEC 62368-1; EN 62368-1
Emissions: (Class A)	FCC Part 15; ICES-003 - 7; EN55032; BS EN 55032; CISPR 32; AS/NZS CISPR 32
Immunity	EN 50130-4; BS EN 50130-4
Environment	RoHS; WEEE
General	
NDAA & TAA Compliant	Yes
Warranty	5 year warranty



Flex Indoor Mini-Dome



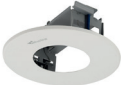





Flex Outdoor Mini-Dome

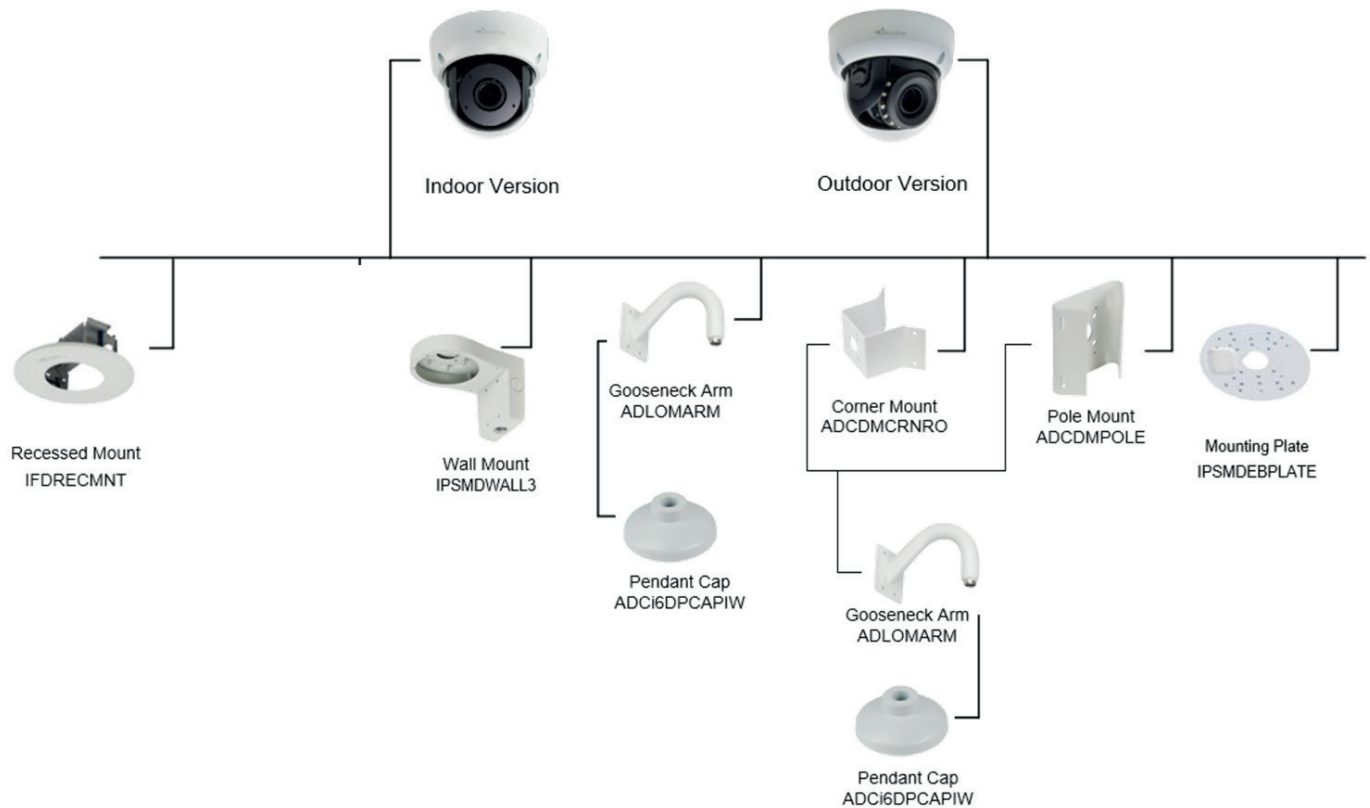
Ordering Information

Model Number	Description
IFS02-D12-ITA4	Illustra Flex Gen4 2MP Minidome, 2.7-13.5mm, Edge AI, IP66/67, IK10, TDN, TWDR, Indoor, Smoked Bubble
IFS04-D12-ITA4	Illustra Flex Gen4 5MP Minidome, 2.7-13.5mm, Edge AI, IP66/67, IK10, TDN, TWDR, Indoor, Smoked Bubble
IFS08-D13-ITA4	Illustra Flex Gen4 8MP/4K Minidome, 3.6-11mm, Edge AI, IP66/67, IK10, TDN, TWDR, Indoor, Smoked Bubble
IFS02-D12-OIA4	Illustra Flex Gen4 2MP Minidome, 2.7-13.5mm, Edge AI, IP66/67, IK10, TDN w/IR, TWDR, Outdoor, Clear Bubble
IFS04-D12-OIA4	Illustra Flex Gen4 5MP Minidome, 2.7-13.5mm, Edge AI, IP66/67, IK10, TDN w/IR, TWDR, Outdoor, Clear Bubble
IFS08-D13-OIA4	Illustra Flex Gen4 8MP/4K Minidome, 3.6-11mm, Edge AI, IP66/67, IK10, TDN w/IR, TWDR, Outdoor, Clear Bubble

Accessories

Accessory Type	Image	Model Number	Description	Dimensions	Color
Wall Mount		IPSMDWALL3	Wall Mount Kit: Indoor/Outdoor, White	6.3 x 3.3 x 9.1 in (160.5 x 83 x 230.5 mm)	RAL 9003
Pendant Cap		ADCi6DPCAPIW	Pendant Cap: Outdoor, White	Ø5.16 x 2.17 in (Ø141 x 55 mm)	RAL 9003
Gooseneck Arm		ADLOMARM	For use with Pendant Cap	4.4 x 8.78 x 4.4 in (112.5 x 222.9 x 112.5 mm)	RAL 9003
Pole Mount Adapter		ADCDMPOLE	For use with Pendant Cap and Gooseneck Arm, or directly to the camera back plate	Wraps around pole	RAL 9003
Outside Corner Mount Adapter		ADCDMCRNRO	For use with Pendant Cap and Gooseneck Arm, or directly to the camera back plate	5.18 x 7.58 in (131.5 x 192.5 mm)	RAL 9003

Illustra Mini-Dome Recessed Mount		IFDRECMNT	Recessed mount with white bezel, allowing for flush ceiling installation	Ø7.76 x 1.61 in (Ø197 x 41 mm)	RAL 9003
Bubble Assembly		IA-BBL-CV-F4D	Vandal Clear Bubble Assembly	Ø123 x107mm	RAL 9003
Bubble Assembly		IA-BBL-SV-F4D	Vandal Smoked Bubble Assembly	Ø123 x107mm	RAL 9003
Mounting Plate		IPSMDEBPLATE	Mini-dome mounting plate Universal electrical box mounting plate, White	Ø5.6 x 0.13 in (Ø143 x 3.3 mm)	RAL 9003
Adaptor Cable		IA-KIT-WD-UUA	Micro USB On-The-Go (OTG) with USB wireless network adapter, Black		
HDMI Adaptor Cable		IA-HDM-OD-F4D	HDMI adaptor cable, 0.25m		Black



About Johnson Controls

At Johnson Controls (NYSE:JCI), we transform the environments where people live, work, learn and play. As the global leader in smart, healthy and sustainable buildings, our mission is to reimagine the performance of buildings to serve people, places and the planet.

Building on a proud history of nearly 140 years of innovation, we deliver the blueprint of the future for industries such as healthcare, schools, data centers, airports, stadiums, manufacturing and beyond through OpenBlue, our comprehensive digital offering.

Today, with a global team of 100,000 experts in more than 150 countries, Johnson Controls offers the world's largest portfolio of building technology and software as well as service solutions from some of the most trusted names in the industry.

Visit www.johnsoncontrols.com for more information and follow [@Johnson Controls](https://twitter.com/JohnsonControls) on social platforms.

© 2023 Johnson Controls. All rights reserved. Product offerings and specifications are subject to change without notice.

Actual products may vary from photos. Not all products include all features. Availability varies by region; contact your sales representative.

IL1423-DS-202310-R05-HS-EN